

MONTHLY MEMBERSHIP PROGRESS REPORT

LOCATION WISCONSIN

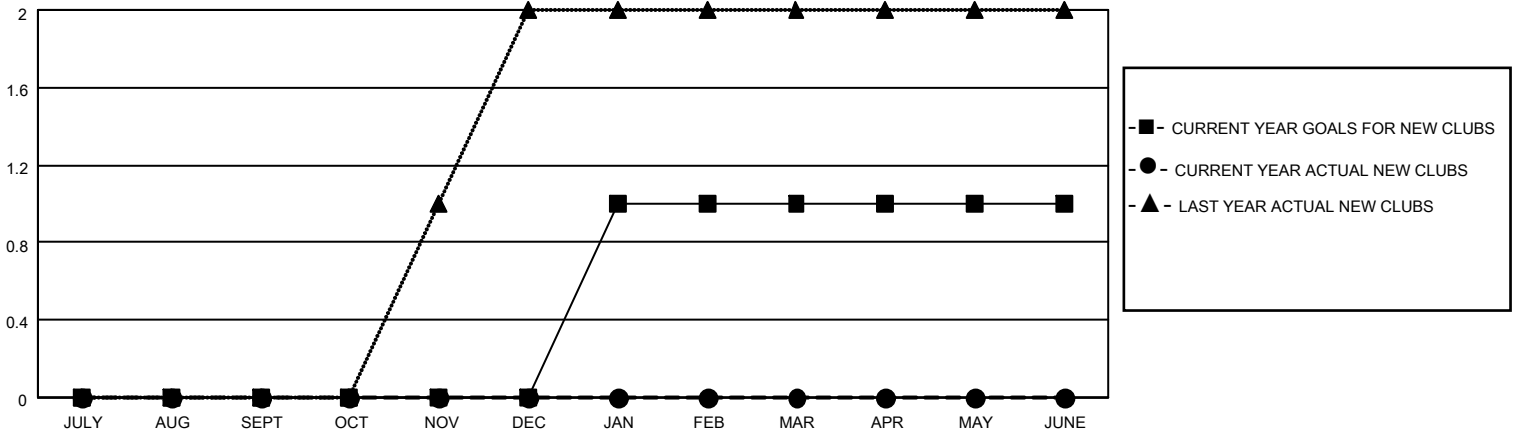
District 27 C2

Results as of: 5/31/2022

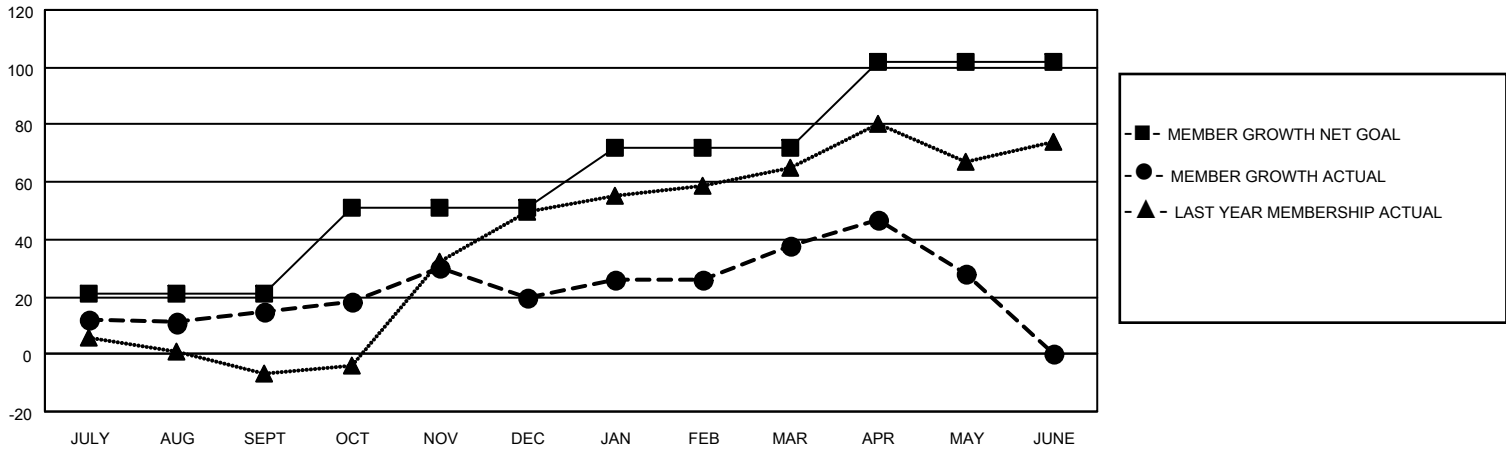
Clubs			
RESULTS FOR 2021-2022			
QUARTER	NEW CLUB GOAL	NEW CLUBS	DROPPED CLUBS
JULY/AUG/SEPT	0	0	0
OCT/NOV/DEC	0	0	0
JAN/FEB/MAR	1	0	0
APR/MAY/JUNE	0	0	1

Members			
RESULTS FOR 2021-2022			
QUARTER	MEMBER GROWTH NET GOAL	MEMBER GROWTH ACTUAL	DROPPED MEMBERS ACTUAL (including transfers)
JULY/AUG/SEPT	21	54	35
OCT/NOV/DEC	30	32	24
JAN/FEB/MAR	21	48	27
APR/MAY/JUNE	30	23	32

GOALS AND ACTUAL NEW CLUBS CUMULATIVE



GOALS AND ACTUAL MEMBERS CUMULATIVE



DROPPED CLUBS: 1

32 CLUBS OF 41 ADDED 1 OR MORE NEW MEMBERS

GENDER DISTRIBUTION

MALE	943 (66.46%)
FEMALE	476 (33.54%)
NON BINARY	0 (0.00%)
PREFER NOT TO ANSWER	0 (0.00%)

DROPPED MEMBERS

[CLICK HERE FOR CUMULATIVE MEMBERSHIP DATA](#)

DECEASED	19
CLUB CANCELLED	0
OTHER	99
TOTAL	118

TOTAL FAMILY UNIT MEMBERS 344

FAMILY MEMBERS PAYING HALF DUES 174